

Region 4

Who are the kids?

- There were 1,880 children in care longer than 60 days (January 2003).
- Of the children who were in care over 60 days, 38% were between 0-3 years; 41% were between 4-11 years; and 21% were 12 years or older.
- Of the children who were in care over 60 days, 48% were Caucasian, 8% were Native American, and 30% were African American.
- More than one half of all children in care longer than 60 days in Region 4 had been in care longer than 21 months (October 2003).

Adoptions, Guardianships and Reunifications Achieved Region 4, 1995-2002

| | Adoptions | Legally Free | Guardianships | Reunifications | Entry to Care |
|---------|-----------|--------------|---------------|----------------|---------------|
| 1995 | 155 | 489 | 198 | 1620 | - |
| 1996 | 111 | 593 | 177 | 1673 | - |
| 1997 | 170 | 640 | 171 | 1561 | 2065 |
| 1998 | 190 | 730 | 221 | 1353 | 1915 |
| 1999 | 182 | 786 | 217 | 1108 | 1593 |
| 2000 | 322 | 640 | 193 | 1084 | 1507 |
| 2001 | 228 | 565 | 177 | 967 | 1482 |
| 2002 | 180 | 529 | 151 | 895 | 1437 |
| FY 2003 | 229 | 437 | - | - | - |

Permanency Outcomes

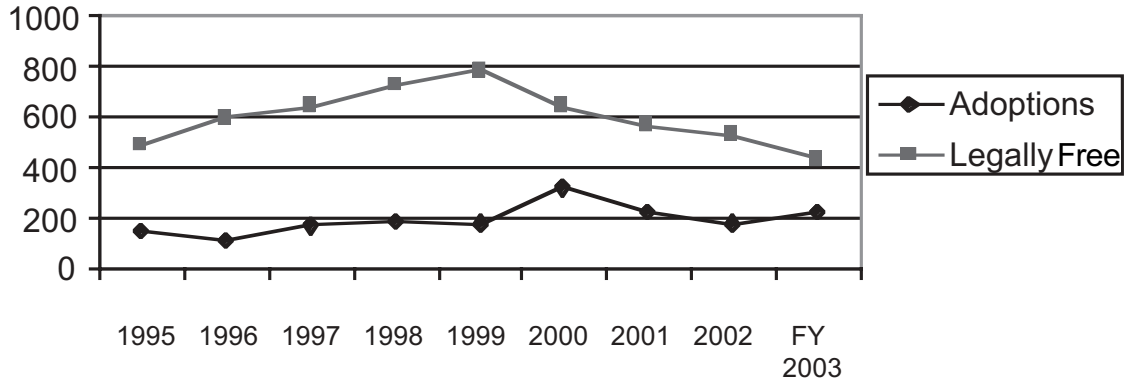
Note: The number of legally free children represents the number free on January 1 of the following calendar year. (For some of these children, adoption is no longer the plan). Other outcomes are for calendar year. The figures from FY 2003 are reported to reflect a more accurate number of adoptions and legally free children due to federal tax incentives.

Source: Children's Administration, August 2003

- Of the children who were adopted in 2002, 51% were less than 2 years old at placement.
- The number of reunifications has declined 43% since 1997. However, a complementary decrease in the number of children entering care (28%) suggests that more than half of this decrease is accounted for by the decrease in entries to care.



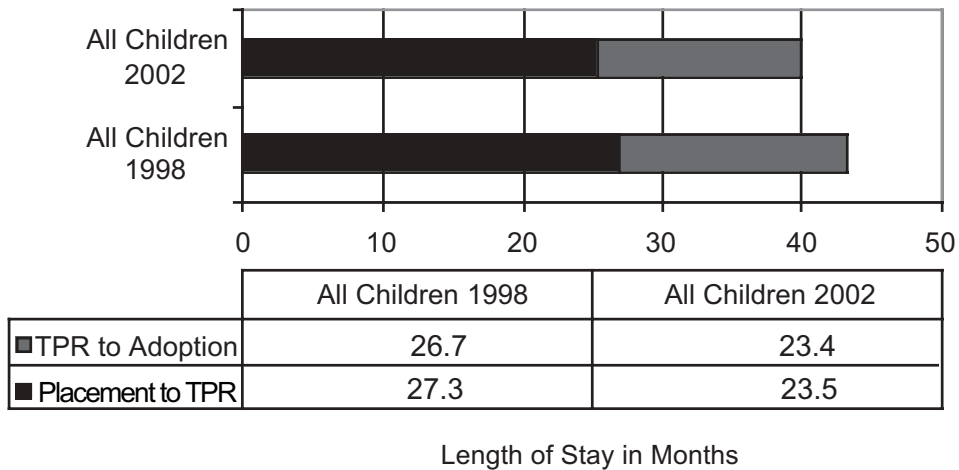
Adoptions and Legally Free Children, 1995-2002 Region 4



Source: Children's Administration, August 2003

- The number of adoptions has increased by 21% in the last five years, while the number of legally free children has decreased by 40%. These trends indicate a significant closing of the gap between the number of adoptions finalized and the number of legally free children awaiting permanence in Region 4.

Length of Time to Adoption Region 4 - 1998 & 2002



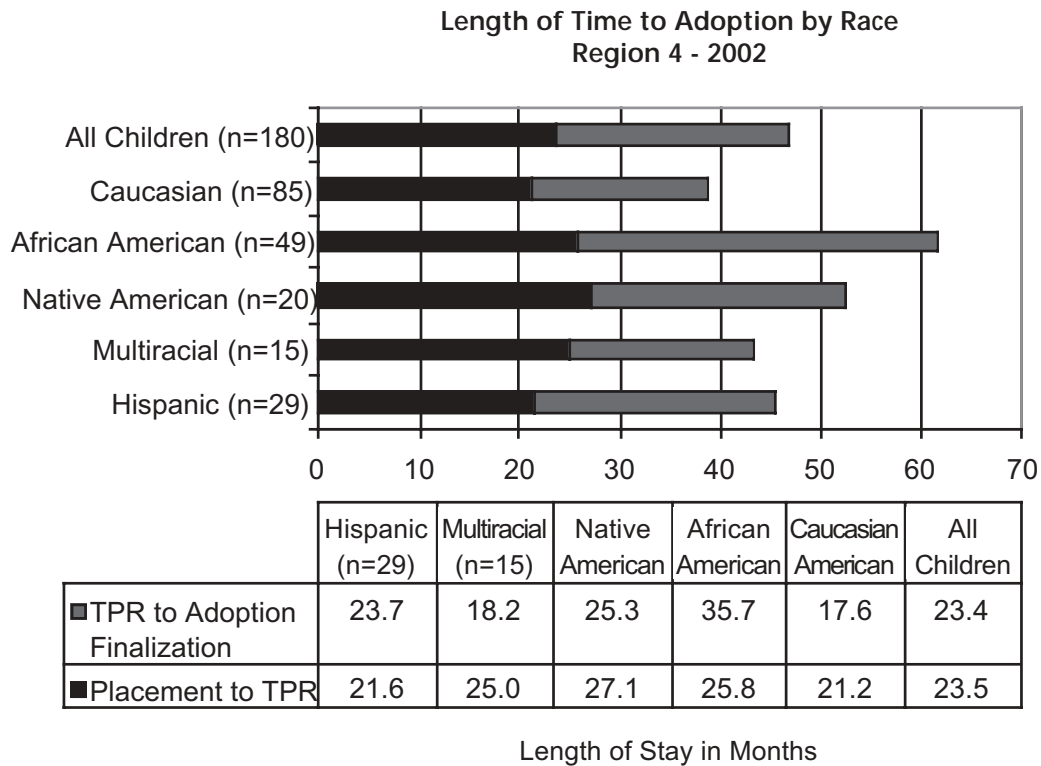
Source: Children's Administration, August 2003

- Overall, Region 4 had a decrease in the total months in care from placement to adoption, from 54 months in 1998 to 46.9 months in 2002.
- The months in care from placement to TPR decreased by 3.8 months.
- The months in care from TPR to adoption finalization decreased by 3.3 months. Half of adoptions were completed within 15 months, which suggests that the region is not yet keeping up with children being freed for adoption.





Region 4 - Length of Time to Adoption by Race



Note: Hispanic children are also included in the other race categories. The Multiracial category was added in 2001 to reflect changes in the national Census Bureau data collection. Only those racial categories with more than 10 children are presented at the regional level.

Source: Children's Administration, August 2003

The total length of time in care for all adopted children in Region 4 remained about the same from 2001 to 2002, 46.3 compared to 46.9, respectively. However, the number of adoptions has increased, and many of the children who had been in care a long time have now been adopted.

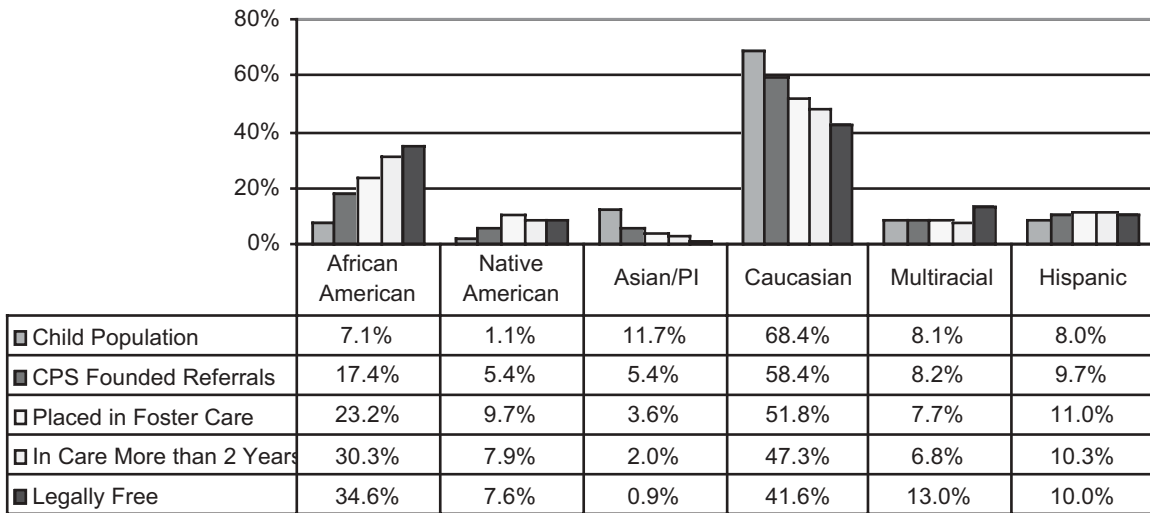
- The total length of time in care for Hispanic children increased slightly by 2 months.
- The total length of time in care for Multiracial children decreased slightly by 3 months.
- The total length of time in care for Native American children decreased by 12.2 months, with the most significant decrease in the number of months from TPR to adoption.
- The total length of time in care for African American children increased by 10 months, with the most significant increase in the number of months from TPR to adoption finalization.





Region 4 - Racial and Ethnic Disproportionality

Region 4 Percentages of CPS Founded Referrals, Placed in Care, in Care More than Two Years, and Legally Free by Race/Ethnic Group, 2002



Note: The total across any category will not equal 100%; Hispanic children are also included in the other race categories; children of "Other" or "Unknown" race are not included in this chart. The Multiracial category was added in 2001 to reflect changes in the national Census Bureau data collection.

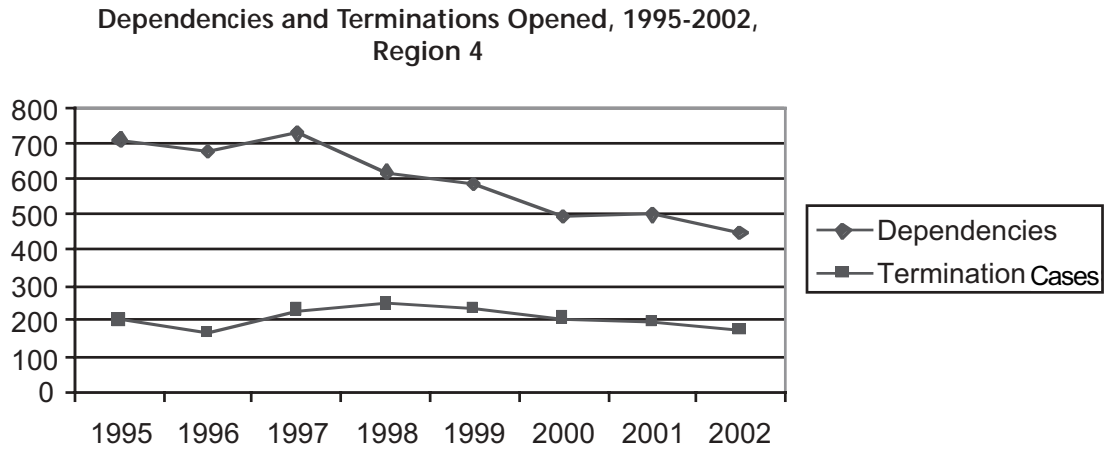
Source: Children's Administration, August 2003

- African American children are four times more likely than Caucasian children to be placed in foster care, six times more likely to be in care longer than two years, and eight times more likely to be legally free. Despite these indicators of disproportionality, the total number of African American children in care longer than two years has decreased by 52% (from 484 in 1999 to 318 in June 2003).
- African American (38%) and Caucasian children (37%) are more likely to be in relative care than Native American children (31%).
- Native American children are almost twelve times more likely than Caucasian children to be placed in foster care, ten times more likely to be in care longer than two years, and eleven times more likely to be legally free.
- Hispanic children are slightly more likely than Caucasian children to be placed into foster care.
- Multiracial and Hispanic children are slightly more likely to be in care longer than two years, and twice as likely to be legally free as Caucasian children.
- Region 4 has significantly reduced the total number of minority children ages birth to three in care longer than one year following termination of parental rights, from 118 in 1999 to 54 in June 2003. However, Region 4 continues to have a greater proportion of the youngest minority children awaiting adoption compared to their Caucasian counterparts.





Region 4 - Legal Actions



Note: Each case represents approximately 1.5 children

Source: Washington State Office of the Attorney General, August 2003. Dependencies and Terminations are the total cases opened in King County.

- The number of dependencies has decreased by 37% since 1995.
- The number of termination cases opened has decreased by 13% since 1995.
- Terminations as a percentage of dependencies opened have increased slightly since 1995, indicating that for every opened termination there were approximately three opened dependencies in the area served by the Seattle AGO office in 2002.